



RESORTS
& HOTELS

DUBAI - SEYCHELLES - MALDIVES

VISION

TO BE RECOGNISED
AS THE LEADING
PROVIDER OF UNIQUE
GETAWAY EXPERIENCES
IN REMARKABLE
LOCATIONS AROUND
THE INDIAN OCEAN
AND IN KEY GLOBAL
DESTINATIONS

MISSION

WE CREATE,
CURATE & DELIVER
SERVICES &
EXPERIENCES
TO THRILL
ALL GENERATIONS

VALUES

TEAMWORK
RECOGNITION
INNOVATION
CREATING MEMORIES
CARING
CELEBRATION
INTEGRITY



A LEGACY UAE BRAND

JA Resorts & Hotels has a widely recognised reputation for excellence in the management and operation of award-winning resorts and hotels. The portfolio now features 9 distinct properties across the UAE and Indian Ocean, each dedicated to curating unique experiences and creating unforgettable memories.





JA RESORTS & HOTELS

UNITED ARAB EMIRATES

- JA Palm Tree Court
- JA Beach Hotel
- JA Lake View Hotel
- JA Ocean View Hotel
- JA Hatta Fort Hotel
- The Manor by JA

MALDIVES

- JA Manafaru

SEYCHELLES

- JA Enchanted Island Resort
- JA Enchanted Waterfront Villas



DUBAI



JA
THE RESORT
JEBEL ALI BEACH
DUBAI



JA
BEACH HOTEL
DUBAI



JA
PALM TREE
COURT
DUBAI



JA
LAKE VIEW
HOTEL
DUBAI



JA
OCEAN VIEW
HOTEL
DUBAI



JA
HATTA FORT
HOTEL
DUBAI



THE MANOR
HOTEL
By
JA

MALDIVES



JA
MANAFARU
MALDIVES

SEYCHELLES



JA
ENCHANTED
ISLAND RESORT
SEYCHELLES



JA
ENCHANTED
WATERFRONT
SEYCHELLES





THE RESORT
JEBEL ALI BEACH
DUBAI

DUBAI'S **LARGEST** **EXPERIENCE** RESORT

[CLICK HERE FOR A VIRTUAL 360° TOUR](#)





THE RESORT
JEBEL ALI BEACH
DUBAI

AN ALL-INCLUSIVE HAVEN FOR ALL AGES

JA The Resort offers 25 restaurants and bars, over 40 experiences, and three unique five-star hotels across a stunning 1 million square metres.





BEACH HOTEL
DUBAI

DUBAI'S FIRST RESORT





ACCOMMODATIONS

235 rooms & suites consisting of:

- 169 Resort View and Sea View Rooms - 32sqm
- 27 Deluxe Sea View Rooms - 38sqm
- 15 Resort View Junior Suites - 64sqm
- 8 One Bedroom Suites - 64sqm with Premium lounge benefits
- 12 Two View Connecting Rooms - 64sqm
- 4 Premium One Bedroom Suites - 122sqm with Premium lounge benefits





RESORT VIEW & SEA VIEW ROOMS

- 32sqm
- 2 adults & 1 child under 6 years
- King or twin beds
- En-suite bathroom
- Private balcony
- Wifi
- Minibar
- Free Parking
- LCD TV
- Coffee & Tea
- In-room safety deposit box





DELUXE SEA VIEW ROOM

- 38sqm
- 2 adults & 1 child under 6 years
- King or twin beds
- En-suite bathroom
- Private terrace with
- sun loungers & umbrella

- Wifi
- Minibar
- Free Parking
- LCD TV
- Coffee & Tea
- In-room safety deposit box



BEACH HOTEL
DUBAI





RESORT VIEW JUNIOR SUITE

- 64sqm
- 2 adults, 2 children under 6 years & 1 infant
- King beds
- En-suite bathrooms with walk-in shower
- 2 Private balconies
- Wifi
- Minibar
- Free Parking
- LCD TV
- Coffee & Tea
- In-room safety deposit box



BEACH HOTEL
DUBAI





TWO SEA VIEW CONNECTING ROOM

- 64sqm
- 2 adults & 3 children under 6 years
- King or twin beds
- 2 en-suite bathrooms
- 2 private balconies
- Wifi
- Minibar
- Free Parking
- LCD TV
- Coffee & Tea
- In-room safety deposit box



BEACH HOTEL
DUBAI





ONE BEDROOM SUITE

- 64sqm
- 2 adults, 2 children under 6 years & 1 infant
- King or twin beds
- Living room
- En-suite bathrooms
- Private balconies
- Premium Lounge access

- Wifi
- Minibar
- Free Parking
- LCD TV
- Coffee & Tea
- In-room safety deposit box





PREMIUM ONE BEDROOM SUITE

- 122sqm
- 2 adults, 3 children under 6 years & 1 infant
- King or twin beds
- Living room
- En-suite bathrooms
- Walk in closet
- Private balconies
- Premium Lounge access
- Wifi
- Minibar
- Free Parking
- LCD TV
- Coffee & Tea
- In-room safety deposit box



BEACH HOTEL
DUBAI





JA
PALM TREE
COURT

**BEACHFRONT
VILLA SUITES**





ACCOMMODATIONS

212 suites consisting of:

88 Garden View Junior Suites - 60sqm

36 Sea View Junior Suites - 60sqm

22 Garden Terrace Junior Suites - 62sqm

22 Premium Garden Terrace Junior Suites- 62sqm

24 Beachfront Terrace Junior Suites - 62sqm

8 Sea View Residence Junior Suites - 60sqm with enhanced residence benefits

6 Sea View One Bedroom Suites - 120sqm with enhanced benefits

4 Beachfront Residence One Bedroom Suites - 124sqm with enhanced residence benefits

2 Sea View Residence Two Bedroom Suites - 210sqm with enhanced residence benefits





GARDEN VIEW & SEA VIEW JUNIOR SUITES

- 60sqm
- 2 adults, 2 children under 16 years & 1 infant
- King or twin beds
- En-suite bathroom
- Wardrobe closet
- Private balcony
- Wifi
- Minibar
- Free Parking
- LCD TV
- Coffee & Tea
- In-room safety deposit box





BEACHFRONT TERRACE JUNIOR SUITES

- 62sqm
- 2 adults, 2 children under 16 years & 1 infant
- King or twin beds
- En-suite bathroom
- Wardrobe closet
- Private terrace with sun lounges

- Wifi
- Minibar
- Free Parking
- LCD TV
- Coffee & Tea
- In-room safety deposit box





PREMIUM GARDEN TERRACE JUNIOR SUITE

- 62sqm
- 2 adults, 2 children under 16 years & 1 infant
- King or twin beds
- En-suite bathroom
- Wardrobe closet
- Private terrace or balcony
- Wifi
- Minibar
- Free Parking
- LCD TV
- Coffee & Tea
- In-room safety deposit box





SEA VIEW ONE BEDROOM SUITE

- 120sqm
- 2 adults, 3 children under 16 years & 1 infant
- King or twin beds
- 2 en-suite bathroom
- Wardrobe closet
- 2 private balconies
- Access to premium lounge
- Wifi
- Minibar
- Free Parking
- LCD TV
- Coffee & Tea
- In-room safety deposit box





SEA VIEW RESIDENCE JUNIOR SUITE

- 60sqm
- 2 adults, 2 children under 16 years & 1 infant
- King bed
- En-suite bathroom
- Wardrobe closet
- Private balcony
- Access to premium lounge

- Wifi
- Minibar
- Free Parking
- LCD TV
- Coffee & Tea
- In-room safety deposit box





BEACHFRONT RESIDENCE ONE BEDROOM SUITE

- 124sqm
- 2 adults, 3 children under 16 years & 1 infant
- King bed
- En-suite bathroom
- Wardrobe closet
- Private terrace
- Access to premium lounge

- Wifi
- Minibar
- Free Parking
- LCD TV
- Coffee & Tea
- In-room safety deposit box

JA
PALM TREE
COURT





SEA VIEW RESIDENCE TWO BEDROOM SUITE

- 210sqm
- 4 adults, 3 children under 16 years & 1 infant
- King bed
- En-suite bathroom
- Wardrobe closet
- 83sqm private terrace with sun loungers
- Access to Premium Lounge

- Wifi
- Minibar
- Free Parking
- LCD TV
- Coffee & Tea
- In-room safety deposit box

JA
PALM TREE
COURT





LAKE VIEW
HOTEL

**THE LIFESTYLE HUB
OF JA THE RESORT**





LAKE VIEW
HOTEL

ACCOMMODATIONS

348 rooms & suites consisting of:

- 159 Deluxe Rooms - 40sqm
- 71 Resort Course View Rooms - 40sqm
- 57 Premium Resort Course View Rooms - 40sqm
- 10 Junior Suites - 70sqm
- 7 Resort Course One Bedroom Suites - 132sqm
- 18 One Bedroom Terrace Suites - 168sqm
- 4 One Bedroom Private Pool Suites- 168sqm
- 20 Two Deluxe Connecting Rooms - 80sqm
- 2 Two Bedroom Outdoor Jacuzzi Suites- 250sqm





DELUXE ROOM

- 40sqm
- 2 adults & 1 child under 12 years old
- King or twin beds
- En-suite bathroom with bathtub
- Access to 800 metres of private beach
- Wifi
- Minibar
- Free Parking
- Flat screen TV
- Bedside USB ports
- Coffee & Tea
- In-room safety deposit box





RESORT COURSE VIEW ROOM

- 40sqm
- 2 adults & 1 child under 12 years old
- King or twin beds
- Balcony
- Wifi
- Minibar
- Free Parking
- Flat screen TV
- Bedside USB ports
- Coffee & Tea
- In-room safety deposit box





PREMIUM RESORT COURSE VIEW ROOM

- 40sqm
- 2 adults & 1 child under 12 years old
- King bed or twin beds
- En-suite bathroom with bathtub
- Balcony
- Wifi
- Minibar
- Free Parking
- Flat screen TV
- Bedside USB ports
- Coffee & Tea
- In-room safety deposit box





JUNIOR SUITE

- 70sqm
- 2 adults & 2 children under 12 years old
- King bed
- En-suite bathroom with bathtub
- Separate living area
- Wifi
- Minibar
- Free Parking
- Flat screen TV
- Bedside USB ports
- Coffee & Tea
- In-room safety deposit box





ONE BEDROOM TERRACE SUITE

- 168sqm
- 2 adults & 2 children under 12 years & 1 infant
- King bed
- Separate living & dining area
- En-suite bathroom with large bathtub & walk-in shower
- Terrace
- Premium lounge access
- Wifi
- Minibar
- Free Parking
- Flat screen TV
- Bedside USB ports
- Coffee & Tea
- In-room safety deposit box





RESORT COURSE ONE BEDROOM SUITE

- 132sqm
- 2 adults & 3 children under 12 years
- King bed
- Balcony
- Premium Lounge access
- Separate living area
- Wifi
- Minibar
- Free Parking
- Flat screen TV
- Bedside USB ports
- Coffee & Tea
- In-room safety deposit box





ONE BEDROOM PRIVATE POOL SUITE

- Private Pool & Terrace
- 168 sqm
- 2 adults & 2 children under 12 years old & 1 infant
- King bed
- Premium Lounge access
- Separate living area & dining area
- Wifi
- Minibar
- Free Parking
- Flat screen TV
- Bedside USB ports
- Coffee & Tea
- In-room safety deposit box





TWO BEDROOM OUTDOOR JACUZZI SUITE

- Terrace with private jacuzzi
- 250sqm
- 4 adults & 3 children under 12 years old or 6 adults
- King & twin bed
- Premium Lounge access
- Separate living area
- Wifi
- Minibar
- Free Parking
- Flat screen TV
- Bedside USB ports
- Coffee & Tea
- In-room safety deposit box





THE RESORT
JEBEL ALI BEACH
DUBAI

**A CULINARY
JOURNEY OF
25 RESTAURANTS
AND BARS**



81
EIGHTY ONE

EIGHTY ONE (81)
JA Lake View Hotel
Lavish dinner and
breakfast buffets



REPUBLIK

REPUBLIK
JA Lake View Hotel
Modern gastro pub



The Anchor

ANCHOR POOL BAR
JA Palm Tree Court
Swim-up pool bar serving refreshments

ANCHOR RESTAURANT
JA Palm Tree Court
Poolside restaurant serving
snacks and refreshments



Captain's

CAPTAIN'S RESTAURANT & BAR
JA Beach Hotel
Beachfront Mediterranean cuisine
with wood fired pizza



IBN MAJED
JA Beach Hotel
International buffet restaurant



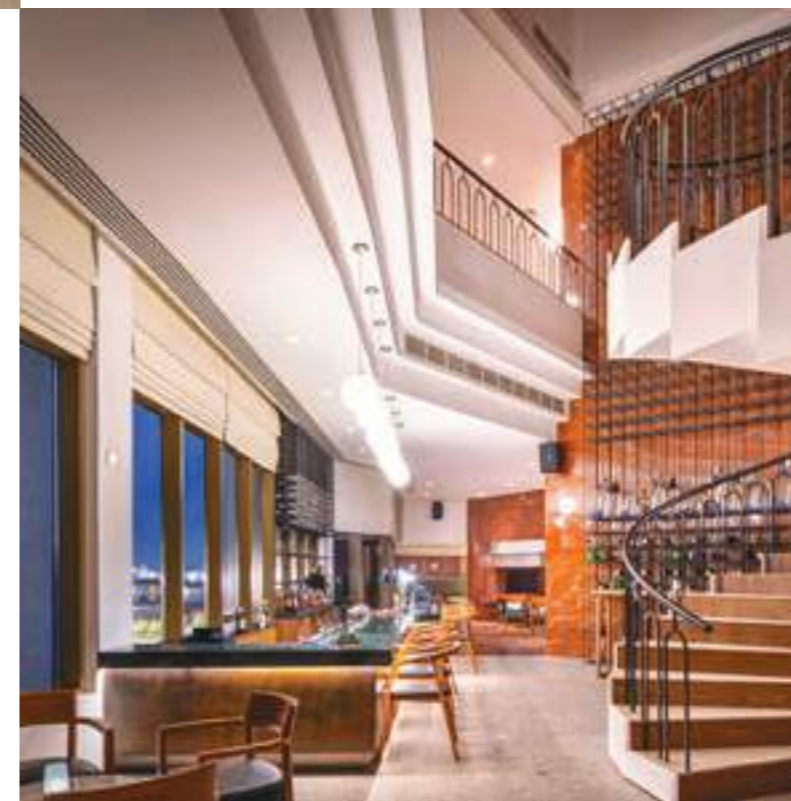
THE VIBE

POOL BAR

VIBE POOL BAR
JA Lake View Hotel
Adults poolside bar



KINARA BY VIKAS KHANNA
JA Lake View Hotel
Specialty Indian restaurant
led by Michelin star chef Vikas Khanna



SETTE
JA Beach Hotel
Signature restaurant serving authentic
Italian cuisine

SETTE LOUNGE
JA Beach Hotel
Signature Italian lounge serving pre and post
dinner drinks



LA FONTANA BRASSERIE
JA Palm Tree Court
International buffet restaurant



TAPERIA
JA Beach Hotel
Tapas restaurant with traditional Spanish favourites



VASCO DA GAMA
JA Beach Hotel
Ideal place for drinks and live entertainment



SPORTS CAFÉ
Club Jumana
European pub grub overlooking JA Marina



WHITE ORCHID LOUNGE

JA Palm Tree Court
Signature cocktails

WHITE ORCHID RESTAURANT

JA Palm Tree Court
Contemporary South-East Asian cuisine



SMOKIN' GUN

JA Shooting Club
Over-the-top burgers
and top-notch shakes



LA FONTANA POOL BAR

JA Palm Tree Court
Swim-up pool bar
serving refreshments



PALMITO POOL BAR

PALMITO POOL BAR
JA Beach Hotel
Swim-up pool bar
serving refreshments



THE RESORT
JEBEL ALI BEACH
DUBAI

**1 MILLION SQUARE
METRES WITH OVER
40 EXPERIENCES
TO THRILL
ALL GENERATIONS**





ACTIVITIES

- Just Splash splash park and splash pad
- Range of natural wildlife to admire from peacocks to gazelles
- 800-metres of private beach along the Arabian Gulf
- 104 berth private marina
- 8 temperature-controlled swimming pools
- Pirates & Mermaids kids club
- Natural lavish greenery and beauty
- Bio garden for fresh herbs and vegetables
- Mini-golf course



THE RESORT

JEBEL ALI BEACH

DUBAI





THE RESORT
JEBEL ALI BEACH
DUBAI

ACTIVITIES

- Watersports
- Sailing
- Tennis & padel courts & academy
- Squash & badminton courts
- Five football pitches
- Horse riding
- Swimming with horses
- Kids pony rides
- Animal Discovery Zone





ACTIVITIES

- 6 shooting ranges
- Clay pigeon shooting
- Pistol shooting with a range of pistol options
- Archery
- Spa treatments
- Range of facials & massages
- Royal hammam scrubs
- Jacuzzi, sauna & steam room
- 9-hole championship golf course
- JA golf academy



THE RESORT
JEBEL ALI BEACH
DUBAI





OCEAN VIEW
HOTEL
DUBAI

THE ONLY
JBR HOTEL WITH
UNOBSTRUCTED,
PANORAMIC,
BALCONY SEA
VIEWS FROM
EVERY ROOM





OCEAN VIEW
HOTEL
DUBAI

BOTH CITY AND
BEACH LOCATION
WITH **OCEAN VIEWS**
FROM EVERY ROOM
& SUITE





ACCOMMODATIONS

346 rooms & suites consisting of:

176 Sea View Rooms - 39sqm and located on floors 5 to 15

95 Superior Sea View Rooms - 39sqm and located on floors 16 to 21

47 Club Sea View Rooms - 39sqm and located on floors 22 to 25 with Coral Lounge benefits

8 Sea View Junior Suites - 55sqm and located on floors 21 to 23 with Coral Lounge benefits

20 Family One Bedroom Suites - 75sqm





SEA VIEW ROOM

- 39sqm
- 2 adults & 2 children under 12 years old
- King and twin beds
- En-suite bathroom
- Balcony
- Wifi
- Minibar
- Free Parking
- Coffee & Tea
- In-room safety deposit box





SUPERIOR SEA VIEW ROOM

- 39sqm
- 2 adults & 2 children under 12 years old
- King and twin beds
- En-suite bathroom
- Balcony
- Wifi
- Minibar
- Free Parking
- Coffee & Tea
- In-room safety deposit box





CLUB SEA VIEW ROOM

- 39sqm
- 2 adults & 2 children under 12 years old
- King and twin beds
- En-suite bathroom
- Balcony
- Interconnecting rooms
- Access to premium lounge
- Wifi
- Minibar
- Free Parking
- Coffee & Tea
- In-room safety deposit box





SEA VIEW JUNIOR SUITE

- 55sqm
- 2 adults & 2 children under 12 years
- King and twin beds
- En-suite bathroom
- Interconnecting rooms
- Balcony
- Access to premium lounge
- Wifi
- Minibar
- Free Parking
- Coffee & Tea
- In-room safety deposit box





FAMILY ONE BEDROOM SUITE

- 75sqm
- 2 adults & 2 children under 12 years
- King and twin beds
- En-suite bathroom
- 2 Balconies
- Access to premium lounge
- Wifi
- Minibar
- Free Parking
- Coffee & Tea
- In-room safety deposit box





OCEAN VIEW
HOTEL
DUBAI

FEAST FOR THE SENSES



IL MOTTO PIZZERIA

IL MOTTO PIZZERIA

An Italian pizzeria where handcrafted pizzas and pastas are made using authentic recipes.



OFFSIDE

DRINKS. FOOD. SPORTS

OFFSIDE

Dubai's premier sports bar showing over 200 live sporting events on the biggest indoor screen, & offers a great menu of specialty food & drinks.



IL MOTTO

An Italian deli serving classic Italian sandwiches, cheese & meat boards & over 40 different kinds of wine. (Pork Served)



Aqua

AQUA

An all-day dining buffet restaurant featuring live cooking stations, outdoor seating and daily theme nights.



OIA

GREEK RESTAURANT & POOL LOUNGE

OIA

Greek restaurant and pool lounge offering delectable authentic Greek cuisine with live entertainment and weekly brunches with stunning Ain Dubai views.





ACTIVITIES

- Direct access to the open beach from the swimming pool level
- Temperature-controlled infinity pool with gazebo shades & sea views
- 1,200sqm dedicated sundeck with sun loungers
- Health club with jacuzzi, sauna and steam room
- Gymnasium with free weights area
- Padel Tennis court with equipment rental
- Spa offering a selection of facials, massages and body treatments
- Beauty salon offering hair & nail treatments
- Men's salon on the first floor

FOR THE LITTLE ONES

- Children's pool
- CoolZone kids' club (4 years to 12 years)
- Shaded outdoor playground
- Baby sitting service available upon request

JA
OCEAN VIEW
HOTEL
DUBAI





HATTA FORT
HOTEL
DUBAI

**AN ADVENTUROUS
ESCAPE IN DUBAI'S
ONLY MOUNTAIN
RESORT**





HATTA FORT
HOTEL
DUBAI

MANY WAYS
TO RELAX AND
RECONNECT
WITH NATURE,
A MULTITUDE
OF **ADVENTURE**
ACTIVITIES TO
EXPLORE





ACCOMMODATIONS

79 rooms & suites consisting of:

- 38 Deluxe Mountain View Rooms - 45sqm
- 09 Premium Mountain View Rooms - 45sqm
- 04 Pet Friendly Mountain View Rooms - 45sqm
- 03 Deluxe Mountain View Family Rooms - 90sqm
- 02 Three Bedroom Deluxe Villas - 120sqm
- 15 Terra Cabins - 36sqm
- 02 Terra Cabins Pet Friendly - 36sqm
- 05 Terra Cabins Deluxe - 36sqm
- 01 Terra Cabins Deluxe Pet Friendly - 36sqm



HATTA FORT
HOTEL
DUBAI





DELUXE MOUNTAIN VIEW ROOM

- 45 sqm
- 2 adults & 2 children under 12 years
- King or Twin beds
- En-suite bathroom
- Private balcony
- WiFi
- Free Parking
- Coffee and Tea facilities



HATTA FORT
HOTEL
DUBAI





PREMIUM MOUNTAIN VIEW ROOM

- 45 sqm
- 2 adults & 2 children under 12 years
- King or Twin beds
- En-suite bathroom
- Private balcony
- WiFi
- Free Parking
- Coffee and Tea facilities





DELUXE MOUNTAIN VIEW FAMILY ROOM

- 90sqm
- 4 adults & 2 children under 12 years
- King and twin beds
- En-suite bathroom
- Private balcony
- WiFi
- Free Parking
- Coffee and Tea facilities



HATTA FORT
HOTEL
DUBAI





THREE BEDROOM DELUXE VILLA

- 120sqm
- 6 adults & 2 children under 12 years
- King and twin beds
- 2 en-suite bathrooms
- Private terrace
- Private garden with jacuzzi
- WiFi
- Free Parking
- Coffee and Tea facilities





TERRA CABINS

- 36sqm
- Accommodates up to 5 guests
- Natural daylight
- Walk-in rain shower
- Spectacular views
- Mini-bar
- Multimedia projector
- Wardrobe
- Alcove seating area
- Double bed + bunk bed
- WiFi
- Free Parking





JEEMA
International à la carte
menu for dinner



CAFÉ GAZEBO
All-day dining overlooking
Gazebo pool

GAZEBO POOL
An adult-only pool, serving
shisha and cocktails



HIKAYA RESTAURANT
Outdoor restaurant
with Arabic bites & Shisha



ROUMOUL COCKTAIL BAR
Serving aperitifs and nightcaps

POOL BAR

Selection of light snacks and beverages



SUNSET TERRACE

Offering cocktails and mocktails with sunset views



PEAKS CAFÉ

Lobby café with cakes, sandwiches, coffee & more



THE ROCK POOL

Family waterfall pool with snacks & beverages



ACTIVITIES

- 2 outdoor temperature-controlled swimming pools
- Animal life encounters
- Gymnasium
- Mini golf
- Archery & air gun shooting
- Padel Tennis
- Kids play area
- Padel Tennis Court
- Terra Activity Park
- Bio-farm





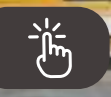
ACTIVITIES

- Mountain biking
- Hiking
- Kayaking at Hatta Dam
- Donut boats, pedal boats at Hatta Dam
- Extreme Sports at Hatta Wadi Hub
- Bee life discovery at Hatta Honey Bee Garden
- Biking trails & bike hire
- Cultural experiences





JUST
WHAT YOU NEED
NO MORE, NO LESS





THE
MANOR
HOTEL
By
JA

LOCATED ONLY
25 MINUTES AWAY
FROM **EXPO CITY** &
NEAR IBN BATTUTA
MALL AND JEBEL
ALI FREE ZONE
(JAFZA)



ACCOMMODATIONS

119 Simplicity Rooms - 28sqm
Accommodates up to 2 adults
Located on floors 1 to 4

75 Clarity Rooms - 28sqm
Accommodates up to 2 adults
Located on floors 5 & 6

33 Priority Rooms - 28sqm
Accommodates up to 2 adults
Located on the 7th floor

One 2 Bedroom Suite - 112sqm
Accommodates up to 4 adults
Located on the 1st floor





SIMPLICITY ROOMS

- 28sqm
- Can accommodate 2 adults
- King or twin beds
- Long Desk
- Mini-bar
- WiFi
- Free Parking
- Coffee and Tea facilities



CLARITY ROOMS

- 28sqm
- Can accommodate 2 adults
- King or twin beds
- Long Desk
- Mini-bar
- WiFi
- Free Parking
- Coffee and Tea facilities



PRIORITY ROOMS

- 28sqm
- Can accommodate 2 adults
- King or twin beds
- Long Desk
- Mini-bar
- WiFi
- Free Parking
- Coffee and Tea facilities





TWO BEDROOM SUITE

- 180 sqm
- Can accommodate 4 adults
- King or twin beds
- Long Desk
- Mini-bar
- Coffee & tea station
- Kitchenette with Microwave & Oven
- WiFi
- Free Parking
- Coffee and Tea facilities





DINING OUTLETS

THE GARDEN RESTAURANT

Hotel's all-day dining restaurant offers a diverse range of international cuisine.

MIA MIA CAFÉ

Serving soft drinks, coffee, tea, pastries and healthy packaged snacks

ROOM SERVICE

Room service is available every day from 7:00 AM till 11:00 PM.





FACILITIES

Gym

A self-service gym with cardio equipment, free weights and stretching mats

Spa

Four treatment rooms offering relaxing treatments for both men and women

Pool

Rooftop temperature-controlled outdoor pool



DUBAI LANDMARK PROXIMITY FROM
THE MANOR BY JA:

- EXPO CITY - 22 minutes
- DWC AIRPORT - 25 minutes
- AIN DUBAI - 15 minutes
- SKYDIVE DUBAI - 17 minutes
- MALL OF THE EMIRATES - 20 minutes
- THE DUBAI MALL | BURJ KHALIFA - 24 minutes
- JA OCEAN VIEW HOTEL - 15 minutes
- NEAREST METRO STATION 6 minutes



SCAN HERE FOR
LOCATION MAP





MANAFARU
MALDIVES

EXPERIENCE
THE REAL MALDIVES





MANAFARU
MALDIVES

TRANQUIL NATURAL REAL

JA Manafaru's secluded position offers uninterrupted views, peace, and pure air. The beautiful all-natural island is an unspoilt gem blessed with pristine beaches, ancient banyans, lush jungle, and exclusive dive sites. And their farm-to-table cuisine, immersive activities, and wellbeing experiences are gentle on the environment and steeped in true Maldivian culture.





MANAFARU
MALDIVES

**UNIQUE
ALL-INCLUSIVE
PRIVATE ISLAND IN
THE MALDIVES**





MANAFARU
MALDIVES

MESMERISING
ENDLESS VIEWS
OF THE INDIAN
OCEAN



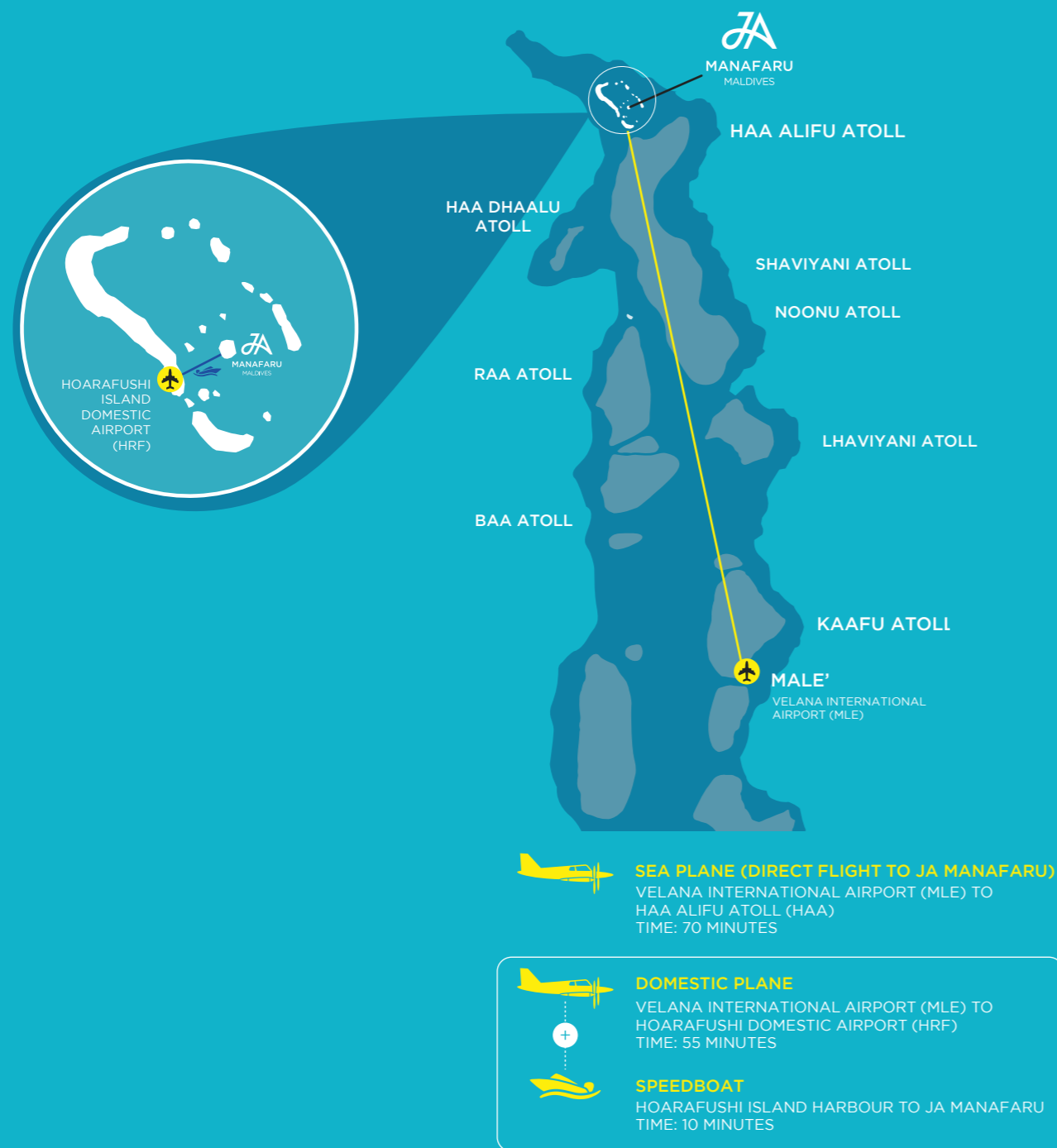


MANAFARU
MALDIVES

YOUR JOURNEY TO PARADISE ARRIVE AT JA MANAFARU BY AIR OR SEA

For guests travelling to JA Manafaru, the journey begins at Velana International Airport with two convenient transfer options. The first is an adventurous seaplane ride, offering stunning aerial views of the Maldives' turquoise waters and coral islands before landing directly at the resort's jetty.

Alternatively, travellers can take a domestic flight from Velana International Airport to Hoarafushi, followed by a short speedboat ride to the island. Both options promise a seamless and scenic start to your stay at JA Manafaru.





ACCOMMODATIONS

84 villas & residences consisting of:

22 Beach Villas with Private Pool - 200sqm

24 Sunrise Water Villas with Infinity Pool - 135sqm

23 Sunset Water Villas with Infinity Pool - 135sqm

12 Deluxe Beach Villas with Family Private Pool - 400sqm

1 Two Bedroom Ocean Residence with Family Infinity Pool - 377sqm

1 Two Bedroom Beach Residence with Family Pool and Private Pool - 1400sqm

1 Three Bedroom Island Residence with Family Pool and Private Pool - 2022sqm



MANAFARU
MALDIVES



BEACH VILLA WITH PRIVATE POOL

- 200 sqm
- Accommodates 2 adults, 1 child (2 - 11 years) and 1 infant (0 - 1 years)
- European super king bed
- Partially open-air bathroom
- Sunken bathtub
- Indoor and outdoor rain showers
- Private pool within a walled garden
- Complimentary Wi-Fi
- Experience host team service
- Sun loungers & cabanas
- Nespresso machine
- Coffee & Tea
- In-villa personal bar
- Dedicated bicycles
- Daily JA branded drinking Water
- Direct beach access



MANAFARU
MALDIVES





SUNRISE & SUNSET WATER VILLAS WITH INFINITY POOL

- 135 sqm
- Accommodates 2 adults, 1 child (2 - 11 years) and 1 infant (0 - 1 years)
- European super king bed
- Partial open-air bathroom
- Hydrotherapy bathtub in Sunset Water Villas*
- Infinity pool
- Dedicated bicycles
- Complimentary Wi-Fi

- Experience host team service
- Sun loungers
- Nespresso machine
- Coffee & Tea
- In-villa personal bar
- Daily JA branded drinking water
- Direct ocean access
- *Freestanding bathtub in Sunrise Water Villas



MANAFARU
MALDIVES





DELUXE BEACH VILLA WITH FAMILY PRIVATE POOL

- 400 sqm
- Accommodates 2 adults, 2 children (2 -11 years) and 1 infant (0 - 1 years)
- European super king bed
- iSpa bathtub
- Indoor and outdoor rain showers
- Private family pool within a waterfall walled garden
- Dedicated bicycles
- Complimentary Wi-Fi
- Experience host team service
- Sun loungers & cabanas
- Nespresso machine
- Coffee & Tea
- In-villa personal bar
- Daily JA branded drinking water
- Direct beach access



MANAFARU
MALDIVES





MANAFARU
MALDIVES

TWO BEDROOM OCEAN RESIDENCE WITH FAMILY INFINITY POOL

- 377 sqm
- Accommodates 4 adults, 2 children under 12 years and 2 infants
- European super king beds
- 2 partial open-air bathrooms
- iSpa bathtubs in each bathroom
- Family infinity pool
- Dedicated bicycles
- Complimentary Wi-Fi
- Experience host team service
- Sun loungers and dedicated outdoor lounge for each master bedroom
- Powder room just off the lounge
- Walk-in pantry with personal bar, Nespresso machine and fine tea and coffee selection
- Daily JA branded water
- Direct access to the ocean for snorkelling





TWO BEDROOM BEACH RESIDENCE WITH FAMILY POOL AND PRIVATE POOL

- 1400 sqm
- Accommodates 4 adults, 2 children (2 - 11 years) and 2 infants (0 - 1 years)
- European super king beds
- 2 open-air bathrooms and a powder room off the first-floor lounge
- Outdoor and indoor rain showers
- iSpa bathtubs
- Private waterfall pool and a family-sized garden pool on the main sundeck
- Spa pavilion with sauna and steam room
- Dedicated bicycles
- Complimentary Wi-Fi
- Experience host team service
- Sun loungers and cabanas
- Two interior lounges
- Walk-in pantry with personal bar, Nespresso machine and fine tea and coffee selection
- Daily JA branded drinking water
- Direct beach access



MANAFARU
MALDIVES





THREE BEDROOM ISLAND RESIDENCE WITH FAMILY POOL AND PRIVATE POOL

- 2022 sqm
- Accommodates 6 adults, 3 children (2 - 11 years) and 2 infants (0 - 1 years)
- European super king beds
- 2 open-air bathrooms and one interior bathroom
- A powder room just off the first-floor lounge
- iSpa bathtub, sunken bathtub and standing shower
- Private waterfall pool within a walled garden and a family-sized garden pool
- Spa pavilion with sauna and steam room
- Dedicated bicycles
- Complimentary Wi-Fi
- Experience host team service
- Sun loungers and cabanas
- Two interior lounges
- Walk-in pantry with personal bar, Nespresso machine, fine tea and coffee selection
- Daily JA branded drinking water
- Secret garden with private beach
- Fitness Pavilion - private access



MANAFARU
MALDIVES





MANAFARU
MALDIVES

CALM SPA SANCTUARY

10 Spa Villas

A haven of pure relaxation and wellness where the principals of centuries old Ayurvedic therapies are entwined with Maldivian Asian traditions. Our wellness journeys are not just for the spirit but are designed to help restore the body and Calm the mind. Wellness Journeys from 90 minutes or more.





MANAFARU
MALDIVES

AN ALL-INCLUSIVE CULINARY JOURNEY

- A bottle of French Champagne and homemade macarons in your villa on arrival
- Daily breakfast in Kakuni Restaurant
- Daily three course a la carte lunch in Kakuni Restaurant or Andiamo Bistro and Pool
- Daily three course a la carte supper or dinner in Ocean Grill, White Orchid, Andiamo Bistro and Pool or Kakuni Restaurant
- Daily sundowners at Veli Bar
- A wide selection of house beverages; alcoholic, non-alcoholic, hot and cold beverages served in the operational outlets from 11am - 11pm daily
- Daily replenishment of your In-villa personal bar at upturn each morning

Beverage offerings may vary from venue to venue. Only consumed items will be replenished daily from your In-villa personal bar. We reserve the right to withdraw alcohol service should we feel the safety of our associates or guests is compromised.





MANAFARU
MALDIVES

EPICUREAN ADVENTURES FOR EVERY TASTE AND EVERY OCCASION

Ocean Grill Restaurant: Signature Seafood & steakhouse by the beach

Kakuni Restaurant: All day dining venue from breakfast, lunch & dinner to coffees and light refreshment served all day

Andiamo Bistro And Pool: Italian & Mediterranean all-day dining venue

The Cellar: «Dining by Design» in the Maldives' first and deepest wine cave *

White Orchid: Modern Japanese cuisine, Teppanyaki grill

Infinity Pool And Bar: Simple poolside beverages served all day and picnic hampers served by the In Villa Dining team if you don't want to leave the pool.





MANAFARU
MALDIVES

EPICUREAN ADVENTURES FOR EVERY TASTE AND EVERY OCCASION

Destination Dining: Choose from six inspired settings to celebrate something special with tailored menus to suit the venue. *

In-Villa Dining: For those lazy days in the villa, a wide offering of favourites that travel well and can be set up at your cabana, depending on your villa type chosen. *

* Does not form part of the All-Inclusive Meal Plan should we feel the safety of our associates or guests is compromised.





KAKUNI

Sitting on the deck looking out to the Ocean beyond, on the sand terrace or under the vaulted ceiling this space offers a myriad of choices to enjoy drinking and dining that work around your time frame and style. This easy space is the primary all day 'World Dining' venue in the property.



MANAFARU
MALDIVES





OCEAN GRILL

A wide selection of local and Indian Ocean Seafood cooked in the show kitchen in the centre of the restaurant. Choose a great steak or some fresh fish or lobsters, caught within the atoll and delivered by our local fisherman. Supplements may apply for some dishes.



MANAFARU
MALDIVES





ANDIAMO BISTRO AND POOL

Mediterranean inspired Bistro, set within a lush oasis around the resort's main swimming pool open for lunch and afternoon dining until early evening. Ideal for all day dining until evening supper for couples and families as needed.



MANAFARU
MALDIVES





WHITE ORCHID LOUNGE

The ideal space for relaxing mid-afternoon for Afternoon Tea and onwards to ensure the perfect position to watch the sun go down and enjoy sundowners or a lighter supper option by sampling the never-ending selection of simple street food and easy eating dishes created for lounge style dining.



MANAFARU
MALDIVES





INFINITY POOL & BAR

This open space is perfect for sun worshipers who want to alternate between the Indian Ocean or the beautiful Infinity Pool. Light poolside beverages are offered throughout the day and remains open until the sun begins to set. Although not a restaurant by arrangement a light, Picnic Hamper offering can be provided for those who simply cannot pull themselves away from their lounge.



MANAFARU
MALDIVES





THE CELLAR

The perfect 'Dining by Design' experience in Maldives first and still deepest sub-terranean wine cave. Open by prior arrangement for a special occasion or paired wine dining or even a wine tasting.



MANAFARU
MALDIVES





ACTIVITIES

- PADI certified dive center
- House reef snorkelling directly from your villa or beach
- Complimentary use of snorkel gear during your stay with us
- Local island boat excursions, including the historical island of “Utheemu”
- Dolphin and turtle quest boat excursions
- Castaway island adventures and picnics
- Lagoon and coral gardens circle the entire island
- Complimentary use of non-motorised water sports equipment
- Water sports centre – including jet skiing, boarding and sailing
- On land leisure and recreation, including beach volleyball, futsal, Garden games and more



MANAFARU
MALDIVES





ACTIVITIES

- Fitness Pavilion including fitness center, stretching studio and yoga terrace
- Two recreational island pools
- 'Seatopia' - marine and environmental awareness lounge
- Eco golf driving range
- Tennis court and badminton court
- 'Magey Hiyaa' - Maldives cultural awareness center



MANAFARU
MALDIVES

- Utheemu Gallery - home of our Maldivian Library and photography installation.
- Nature trail, outdoor fitness trail and jogging routes
- The Kids Club - Cool Zone





MANAFARU
MALDIVES

LET'S DIVE IN





MANAFARU
MALDIVES

33 DIVING SITES 3 INSTRUCTORS 3 LANGUAGES

Chances of diving the house reef more than once during your stay

95%

Dive sites accessible on a half day trip

90%

Standard mix for nitrox

32%





DIVE SITES

1. Farukolhu Kandu (Nurse shark point)
2. Vagaaru Garden (Manta point)
3. Thuraakunu
4. Uligamu Caves
5. Uligamu Thila
6. Uligamu Corner
7. Becky's Caves
8. Madulu Caves
9. Berimmadhoo Kandu
10. Gambas Beru
11. Rasfushi
12. Medhafushi
13. JA Manafaru House Reef
14. Mulhadhoo Beru
15. Mulhadhoo Corner
16. Filaafuni Thila
17. Kuroolhi Thila
18. Gallandhoo Faru
19. Mattey Muli (Gallandhoo Corner)
20. Dhigufaruhuraa
21. Ehgaafaru
22. Nasfaru
23. Bodu Bandu Thila
24. Kuda Bandu Thila
25. Ihavandhoo Thila
26. Weeping Eye (Ihavandhoo Corner)
27. Huvahandhoo Corner
28. Huvahandhoo Beru
29. Maarandhoo Faru
30. Maarandhoo Beru
31. Thakandhoo Corner
32. Shark Point
33. Filladhoo Wreck





MANAFARU
MALDIVES

BLESSING CEREMONIES & HONEYMOONS





MANAFARU
MALDIVES

BLESSINGS CEREMONIES & HONEYMOONS

Nothing inspires a destination event like an island in the middle of the Indian Ocean, where private gatherings, dream ceremonies or even management retreats find their remote setting.

- Idyllic remote location
- Tailor made accommodation choices
- Stunning venues and settings with beach or jungle backdrop
- Exclusive private island hire options
- Romantic blessing and commitment ceremonies including renewal of vows, honeymoon and anniversary celebrations
- Stunning backdrop for bespoke couples and family photography
- Luxury alternative for product launches and symposiums
- Interesting for workshops, team builds and innovation retreats





DISCOVER THE
MOST EXCLUSIVE
ROMANTIC RESORT
IN THE INDIAN
OCEAN





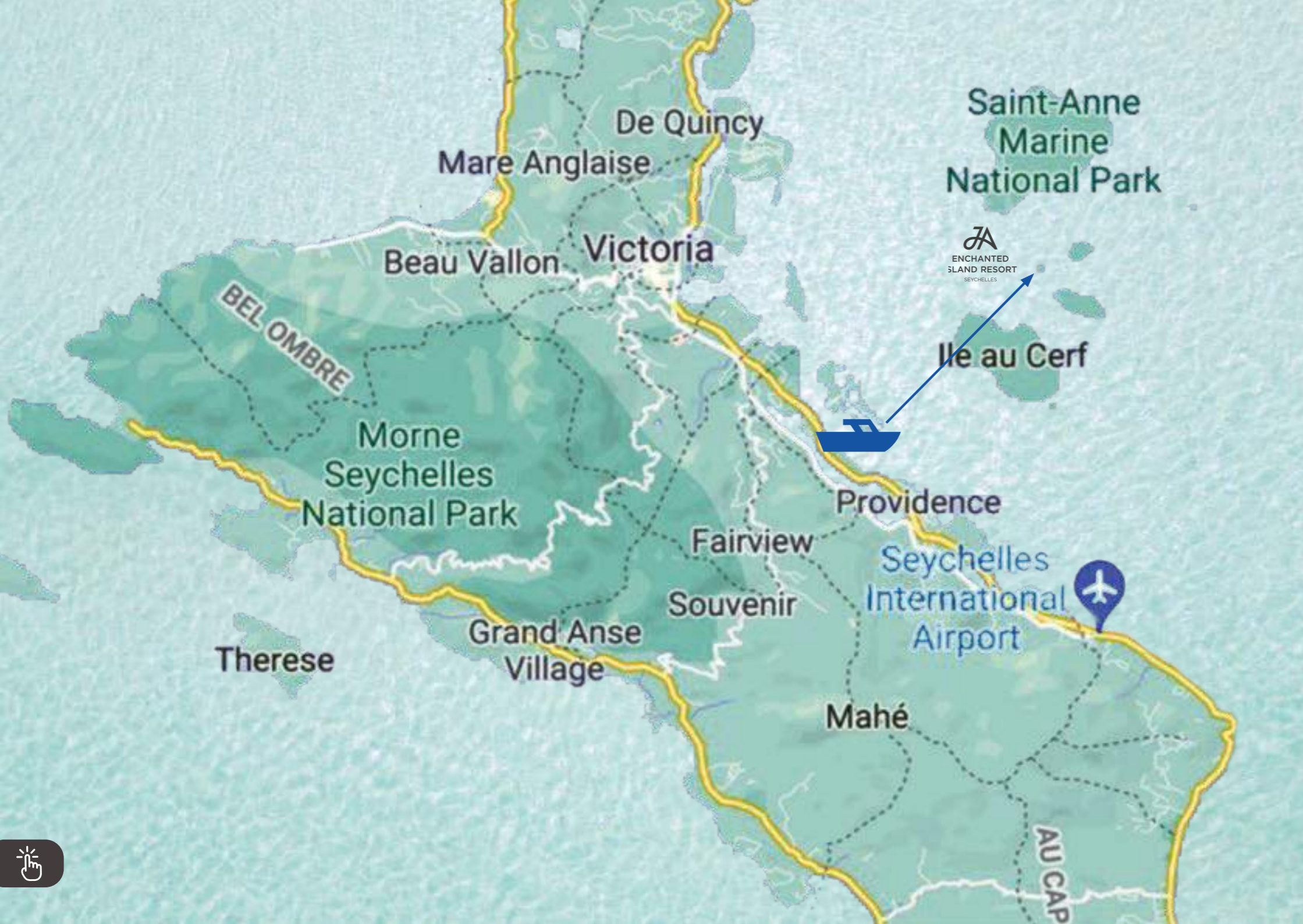
A WONDERLAND OF ROMANTIC DREAMS





**AN EXCLUSIVE
ISLAND HIDEAWAY
JUST FOR YOU**





25 MINUTES TO JA ENCHANTED ISLAND RESORT

10 minutes by car from the airport
to our jetty, followed by a 15 minute
speed boat ride to the resort.





WELCOME TO JA ENCHANTED ISLAND RESORT

As the smallest of all luxury island resorts in the Seychelles located in the heart of Ste. Anne Marine National Park, JA Enchanted Island resonates with the intimate experience of this innermost natural sanctuary.

Voyage back to French-colonial days staying in an exquisitely understated 'home away from home' with classical décor and handpicked antiques, with every piece telling its unique story. JA Enchanted Island is a journey to a time of discoveries, whilst savouring authentic Creole and international cuisine and exploring the Seychelles from its heart – all on your private island where time stands still.



ACCOMMODATIONS

11 villas & 2 lodge rooms consisting of:

2 Enchanted Hilltop Lodge Rooms - 35m²

1 Enchanted Hilltop Villa - 60m²

8 Private Pool Villas - 130m²

1 Enchanted Signature Villa - 240m²

1 Owner's Signature Villa- 243m²





ENCHANTED HILLTOP LODGE ROOM

- 35sqm
- 2 adults
- King size bed
- En-suite bathroom
- Rain shower
- Outdoor terrace
- Villa host
- Complimentary Wi-Fi
- Private balcony
- Coffee & Tea
- Minibar
- Nespresso coffee maker





ENCHANTED HILLTOP VILLA

- 60sqm
- 2 adults
- King size bed
- Outdoor bathroom
- French bathtub
- Outdoor terrace

- Villa host
- Complimentary Wi-Fi
- Coffee & Tea
- Private balcony
- Minibar
- Nespresso coffee maker





PRIVATE POOL VILLA

- 130sqm
- 2 adults & 1 child aged 8-12 years old
- King size bed
- Open air bathroom
- French bathtub
- Private pool
- Villa host
- Complimentary Wi-Fi
- Coffee & Tea
- Direct beach access
- Sun loungers
- Minibar
- Nespresso coffee maker





ENCHANTED SIGNATURE VILLA

- 240sqm
- 4 adults & 2 children aged 8-12 years old
- King and twin beds
- Open air bathroom
- French bathtub
- Private pool
- Villa host
- Complimentary Wi-Fi
- Coffee & Tea
- Direct beach access
- Sun loungers
- Minibar
- Nespresso coffee maker





OWNER'S SIGNATURE VILLA

- 243sqm
- 4 adults & 2 children aged 8-12 years old
- King and twin beds
- Open air bathroom
- French bathtub
- Private pool
- Villa host
- Complimentary Wi-Fi
- Coffee & Tea
- Direct beach access
- Sun loungers
- Minibar
- Nespresso coffee maker





DINING

Bounty Restaurant: All-day dining restaurant with sea views, serving contemporary international gourmet cuisine with Creole influences.

Castaway Bar: Serving a choice of exotic cocktails, aperitifs and cigars.





PRIVATE DINING

Indulge in private dining experiences such as breakfast in bed, moonlit or candlelit dinners in your own villa & more.





ENCHANTED
ISLAND RESORT
SEYCHELLES

SPA & WELLNESS

A blissful hilltop sanctuary radiating energy and harmony in its pivotal position high above the resort. Designed with an emphasis on privacy, the spa and wellness facilities offer rejuvenation and relaxation through age-old healing rituals.





FACILITIES AND EXPERIENCES

- Spa with private steam room, shower room and terrace
- Outdoor infinity swimming pool
- White sandy beach
- Fully equipped fitness centre
- Sunset catamaran cruise
- Big game fishing
- Helicopter tours
- Private tours of Mahé
- Private boat to Praslin and La Digue
- Water sports





ISLAND LIVING RIGHT AT YOUR DOORSTEP

Discover all the beautiful island of Mahé has to offer at JA Enchanted Waterfront. Situated on the East Coast and offering exclusive access to the island lifestyle, right at your doorstep, you will feel right at home at JA Enchanted Waterfront.





ENCHANTED
WATERFRONT
SEYCHELLES

FEEL AT HOME

2 waterfront villas & 3 lodge rooms

- 1 Lodge Room - 22m²
Accommodates up to 2 adults
- 1 Lodge Room - Mountain View - 24m²
Accommodates up to 2 adults
- 1 Lodge Room - Ocean View - 41m²
Accommodates up to 2 adults
- 2 Ocean View Private Pool Villa - 354m²
Accommodates up to 6 adults
Each villa is equipped with its private pool





A CULINARY JOURNEY WITH CREOLE INFLUENCES

1 bistro at JA Enchanted Waterfront Lodge and
more at JA Enchanted Island Resort*

- **STARBOARD BISTRO:**
Smart-casual setting with an ocean view
located poolside
at JA Enchanted Waterfront Lodge.





A CULINARY JOURNEY WITH CREOLE INFLUENCES

1 bistro at JA Enchanted Waterfront Lodge and more at JA Enchanted Island Resort*

- BOUNTY:
Serving variety of International and Creole dishes, showcasing stunning views from morning to evening at JA Enchanted Island Resort





ENCHANTED
WATERFRONT
SEYCHELLES

A CULINARY JOURNEY WITH CREOLE INFLUENCES

1 bistro at JA Enchanted Waterfront Lodge and more at JA Enchanted Island Resort*

- PRIVATE DINING:
Floating breakfast in your private pool, moonlight dinner, private barbecue or lunch in your villa's terraced gazebo are just a few of the many options and villas are equipped with fully serviced kitchen
at JA Enchanted Island Resort

*JA Enchanted Waterfront is a 15 minute boat ride from JA Enchanted Island Resort





THERE IS ADVENTURE

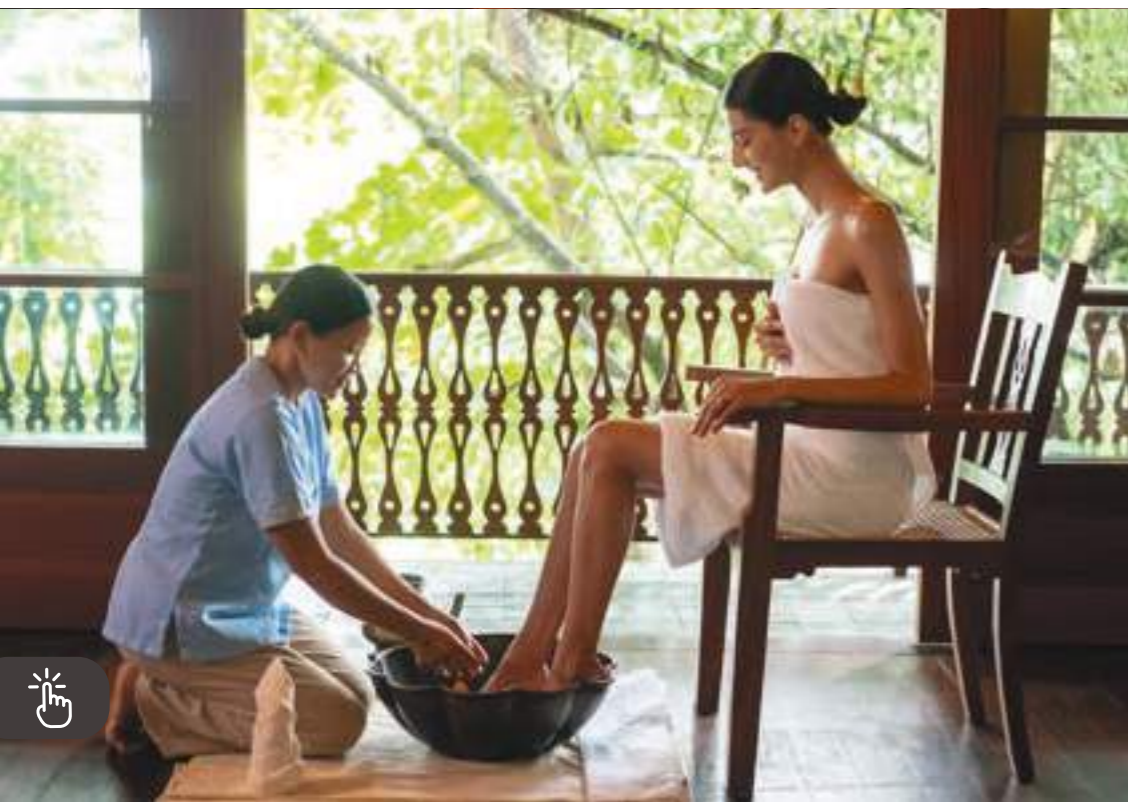
- Sunset cruise
- Big game fishing
- Helicopter tours
- Private tour of Mahé
- Private boat to Praslin and La Digue
- Snorkeling
- Scuba Diving
- Kayak
- Paddle Board
- Trip to Moyenne Island





AND THERE IS SERENITY

- Marina
- Outdoor infinity swimming pool at JA Enchanted Waterfront Lodge
- Outdoor spa surrounded by nature at JA Enchanted Island Resort
- Fully equipped fitness centre at JA Enchanted Island Resort





PROVIDENCE HIGHWAY, SEYCHELLES





www.jaresortshotels.com

+971 4 814 5500

reservations@jaresorts.com

